



Donington Grove | Akron Gate | Wolverhampton | WV10 6EE

£139,950

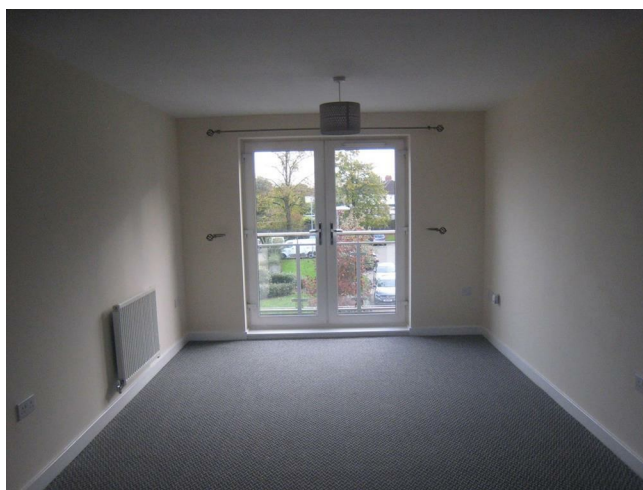
Jackson
LIFE & CLOSE

Key features

- Modern, well-fitted apartment
- Two spacious bedrooms
- Bright reception room
- Purpose-built flat
- Built in 2014
- Located in Donington Grove
- Easy access to Wolverhampton
- Viewing recommended

Description

Modern purpose built second floor apartment



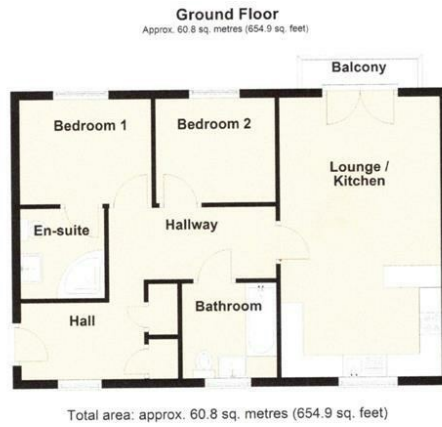
Directions



An attractively presented and well fitted modern second floor apartment holding a highly convenient setting on this popular development.



Floor plans



Energy Efficiency Rating		
	Current	Potential
<i>Very energy efficient - lower running costs</i>		
(92 plus) A		
(81-91) B	81	81
(69-80) C		
(55-68) D		
(39-54) E		
(21-38) F		
(1-20) G		
<i>Not energy efficient - higher running costs</i>		
England & Wales	EU Directive 2002/91/EC	

Jackson
LILE & CLOSE

12 and 13 King Street
Wolverhampton
West Midlands
WV1 1ST
01902 712812

jacksonlileclose@btconnect.com
<https://www.jacksonlileandclose.co.uk/#/>